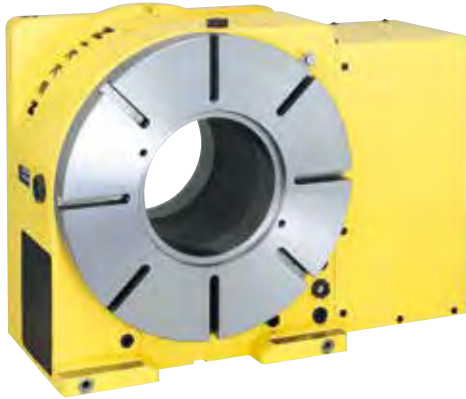


# BIG BORE CNC ROTARY TABLE

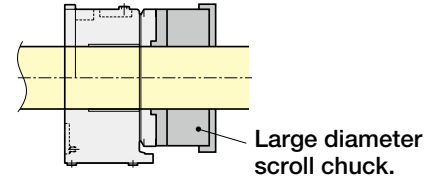
**NIKKEN**



CNCB 450

- Ideal for machining boring pipes for oil or natural gas
- Capable of cutting through-holes in work pieces
- Supports up to 20 + 1P rotary joint ports

Example for the utilization for large diameter bar work



Large diameter scroll chuck.

— MOTOR MOUNTED —		— FACE PLATE —		— M-SIGNAL METHOD —	
<b>R</b> RIGHT HAND	<b>L</b> LEFT HAND	<b>WITH</b> FACE PLATE	<b>W/O</b> FACE PLATE	<b>α21</b> CTRL	<b>EZ</b> CTRL
				<b>P.59</b>	<b>P.69</b>
<b>ROTARY JOINT</b>	<b>ULTRA PRECISION</b>	<b>SUPPORT TABLE</b>	<b>TAIL STOCK</b>	<b>SCROLL CHUCK</b>	<b>POWER CHUCK</b>
<b>P.89</b>	<b>P.87</b>	<b>P.79</b>	<b>P.81</b>	<b>P.83</b>	<b>P.84</b>
				<b>CLAMP DEVICE</b>	<b>T-NUT</b>
				<b>P.85</b>	<b>P.86</b>

## Specifications

Item / Code No.		CNCB 350	CNCB 450	CNCB 630	
Diameter of Table	mm	350	450	630	
Diameter of Spindle Hole	mm	154H7	205H7	345H7	
Center Height	mm	230	280	380	
Width of T Slot	mm	14	18	14	
Clamping System		Hydraulic	Hydraulic	Hydraulic	
Clamping Torque	N·m	3331	3870	6550	
Table Inertia at Motor Shaft	$\left(\frac{GD^2}{4}\right) \text{ kg}\cdot\text{m}^2 \times 10^{-3}$	2.9	2.8	4.8	
Servo Motor	min <sup>-1</sup>	αiF12·2000	αiF12·2000	αiF22·2000	
MIN. Increment		0.001°	0.001°	0.001°	
Rotation Speed	min <sup>-1</sup>	22.2 (44.4)	25.0 (50.0)	11.1 (22.2)	
Total Reduction Ratio		1/90 (1/45)	1/120 (1/60)	1/180 (1/90)	
Indexing Accuracy	sec	15	15	15	
Net Weight	kg	245	330	750	
MAX. Work Load on the Table	Vertical 	kg	250	350	400
	Horizontal 	kg	500	700	800
MAX. Thrust Load applicable on the Table		N	5300	63720	250000
	*1 	FXL N·m	2648	3531	5297
		FXL N·m	3840	5990	33000
Guide Line of MAX. Unbalancing Load	*2 	N·m	100	150	300
MAX. Work Inertia	Vertical 	$\left(\frac{GD^2}{4}\right) \text{ kg}\cdot\text{m}^2$	6.4	17.0	40.0
Driving Torque	*3 	N·m	432	576	1584

\*1 This is the strength of the worm wheel without brake. It is applied against dynamic cutting thrust.

\*2 The guide line of MAX unbalancing load means the unbalancing load, when the rotary table is used with support table in vertical application. The guide line figure will be different according to the servo motor, please refer to P.57 for more detail.

\*3 Driving torque means the torque at MAX. rotation speed after acceleration. Driving torque is almost constant and independent from the load except unbalancing load is applied.

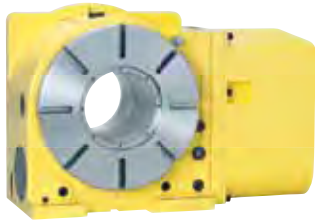
★ Total reduction ratio of 1/180 is also available for CNCB450. ★ αiF22/4000 motor can be mounted on CNCB350, 450.

# CNCB350, 450(T), 630

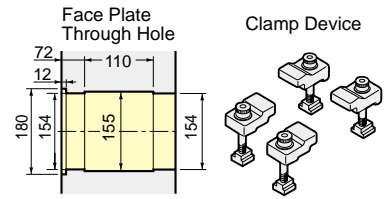
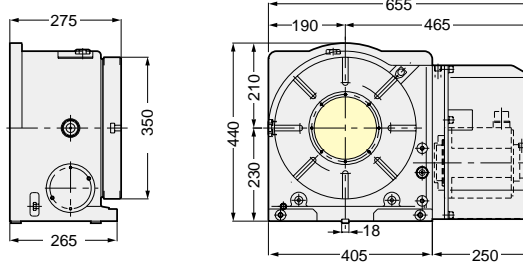


External dimensions depend on the type of the servo motor. Indicated dimensions are in case of FANUC. Please contact us for CAD files (2D:DXF, 3D:PARASOLID).

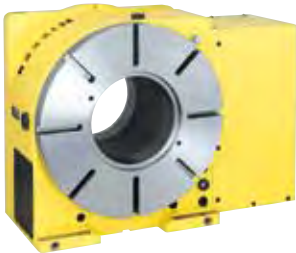
## CNCB350



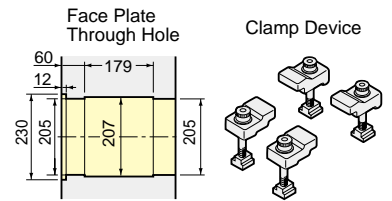
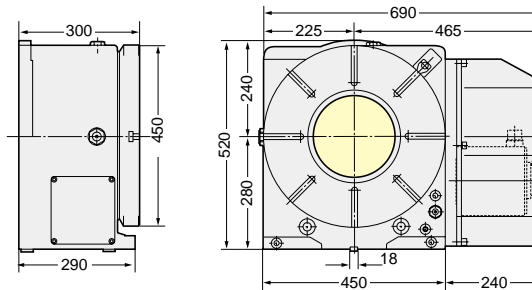
### Ultra Big Bore ( 154mm) Specification



## CNCB450



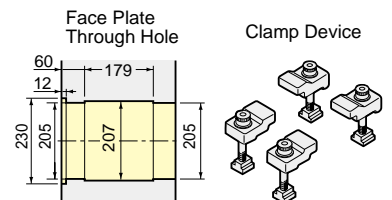
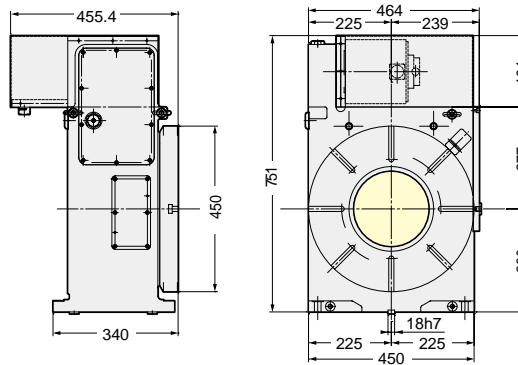
### Ultra Big Bore ( 205mm) Specification



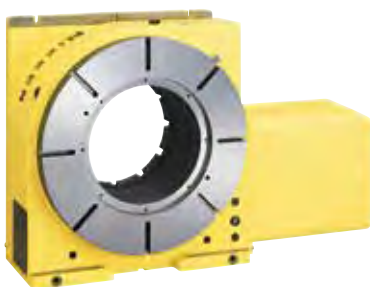
## CNCB450T



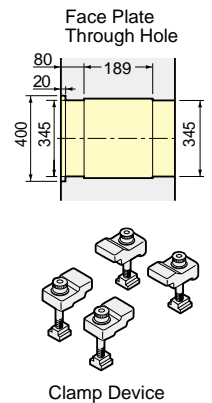
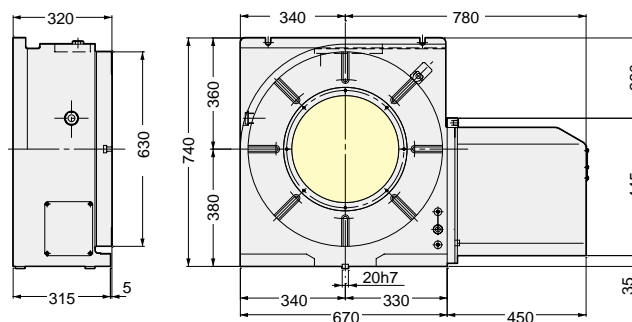
### Ultra Big Bore ( 205mm) Specification



## CNCB630



### Ultra Big Bore ( 345mm) Specification



CNC

NCT

NSV

NST

SAX

DD

BUILT-IN

MOTORS

M-SIGNAL

ACC

O/P

TEC

SERV

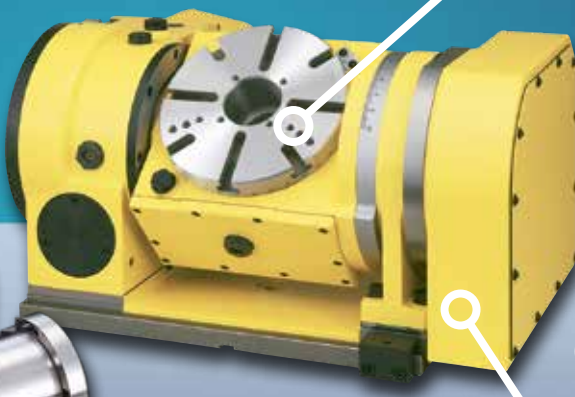
# YOUR CNC ROTARY TABLE SOLUTION



**REDUCED SETUPS,  
INCREASED PRODUCTIVITY,  
PROFITS IN YOUR POCKET!**

Heat Treated and Ion Nitrided Steel Worm Wheel greatly increases wear resistance and reduces backlash adjustment

Extreme rigidity, concentricity and precision with 4 arc second repeatability



Compact design to fit any CNC machining center

Patented Solid Carbide Worm Screw, thread ground for extreme accuracy and precision

## ROTARY TABLE FEATURES



### Unique Faceplate and Worm Wheel Assembly

- Unique shrunk fit worm wheel design onto solid faceplate and quill body for high precision concentricity
- Shorter distance from faceplate to gear allows for greater torsional forces to be sustained



### Independent Tubular Thrust and Radial Bearings

- Custom paired and matched for every rotary table
- Provide vibration dampening and internal gear protection
- Extreme rigidity and concentric accuracy from needle roller bearings



Phone: (847) 367-4800



Email: [sales@lyndexnikken.com](mailto:sales@lyndexnikken.com)



[www.lyndexnikken.com](http://www.lyndexnikken.com)

Connect with us on our social media channels!

